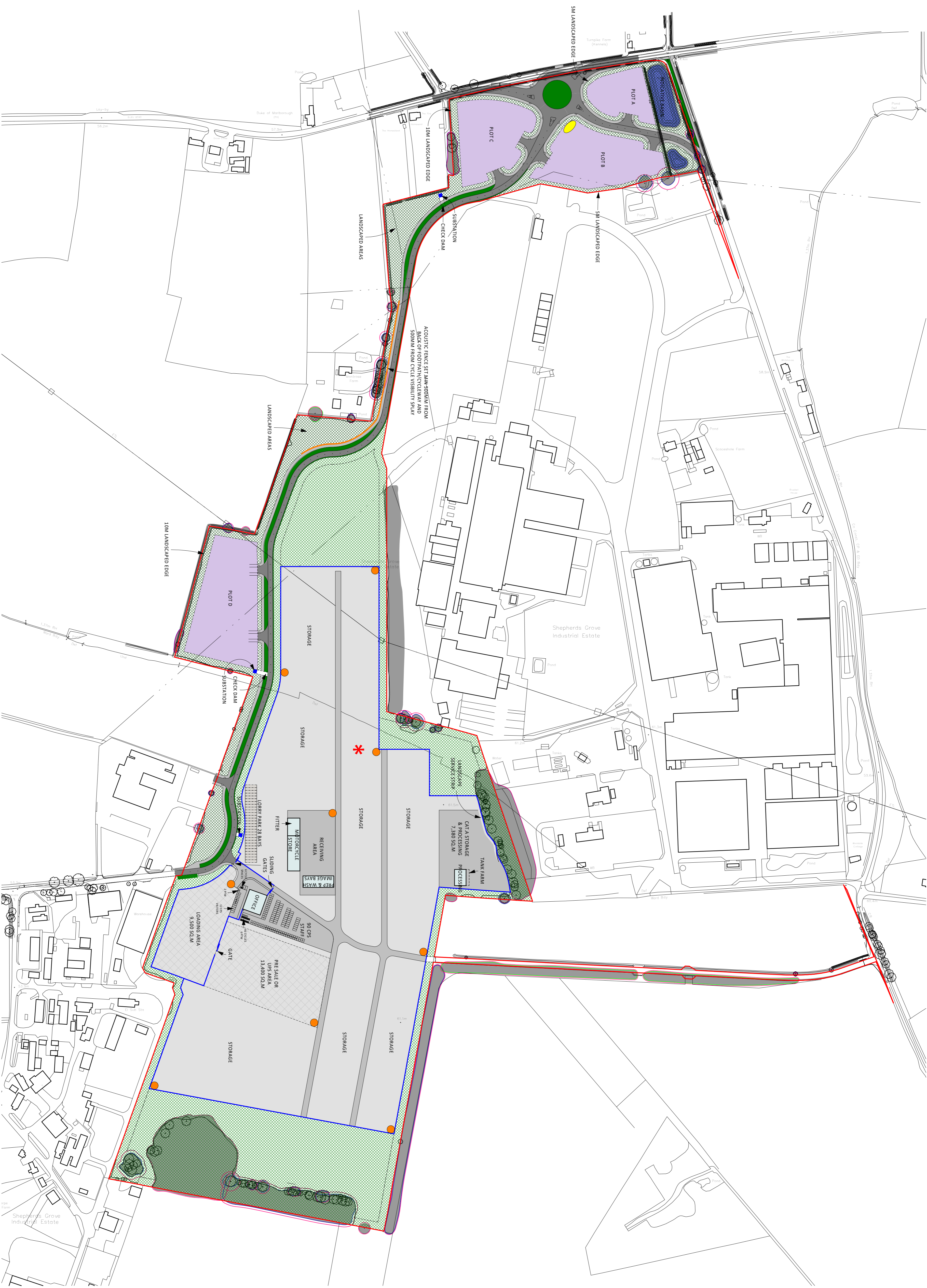


Figured dimensions only are to be used. All dimensions to be checked on site.
 of quantities to be reported to the PRC Group.
 The copyright of the drawings and designs contained therein remains
 with the PRC Group.

Revisions:

PLANNING ISSUE	M/C/2C	29.11.2022
LANDSCAPE SURFERS	M/C/2C	23.08.2023
UPDATED		

Drawn / Date: 0.11.C.
 A



- KEY:
- GENERAL EMPLOYMENT & ROADSIDE USES
 - * B8 USE DEPT FOR THE STORING, DISTRIBUTION AND PROCESSING OF ACCIDENT DAMAGED AND NON-DAMAGED MOTOR VEHICLES
 - TARMAC SURFACE
 - CONCRETE SURFACE
 - STONE SURFACE
 - ALLOCATED AREAS (STONE SURFACE)
 - EXISTING PERIMETER TREES & LANDSCAPING RETAINED
 - NEW PERIMETER & LANDSCAPING FRAMEWORK
 - SIGNAGE LAND
 - 2.4M PALISADE FENCE
 - DISABLED PARKING
 - EV PARKING PROVISION
 - EV PARKING FUTURE PROVISION
 - CAMERA POLES
 - ACOUSTIC FENCE - LOCATION ADVISED BY THE ACCOMPANYING NOISE IMPACT ASSESSMENT
 - SUBSTATION

CLIENT:
JAYNIC SUFFOLK PARK LOGISTICS LTD

PROJECT:
BURY ROAD STANTON

24 Church St, West, Woking, Surrey, GU24 0HT
 01483 484 350
www.prcgroup.com

DATE: 29.11.2022

Scale @ A1: 1:2500

Checked by: SC

Stage: Drawing No: PL_003

Rev: A

DATE: 29.11.2022

Checked by: SC

Stage: Drawing No: PL_003

Rev: A

PRC Architecture & Planning

24 Church St, West, Woking, Surrey, GU24 0HT
 01483 484 350
www.prcgroup.com

PRC Architecture & Planning

24 Church St, West, Woking, Surrey, GU24 0HT
 01483 484 350
www.prcgroup.com

PRC Architecture & Planning

24 Church St, West, Woking, Surrey, GU24 0HT
 01483 484 350
www.prcgroup.com

